

REDSCAN Alarm Log User Guide

Ver.1.1.4

Contents

1. Introduction.....	1
1.1. Compatible products	1
1.2. Software Requirements.....	1
2. How to use REDSCAN Alarm Log.....	2

1. Introduction

In this document, we will explain how to use “REDSCAN Alarm Log”. Using this software, you are able to check alarm date/time and alarm position.

1.1. Compatible products

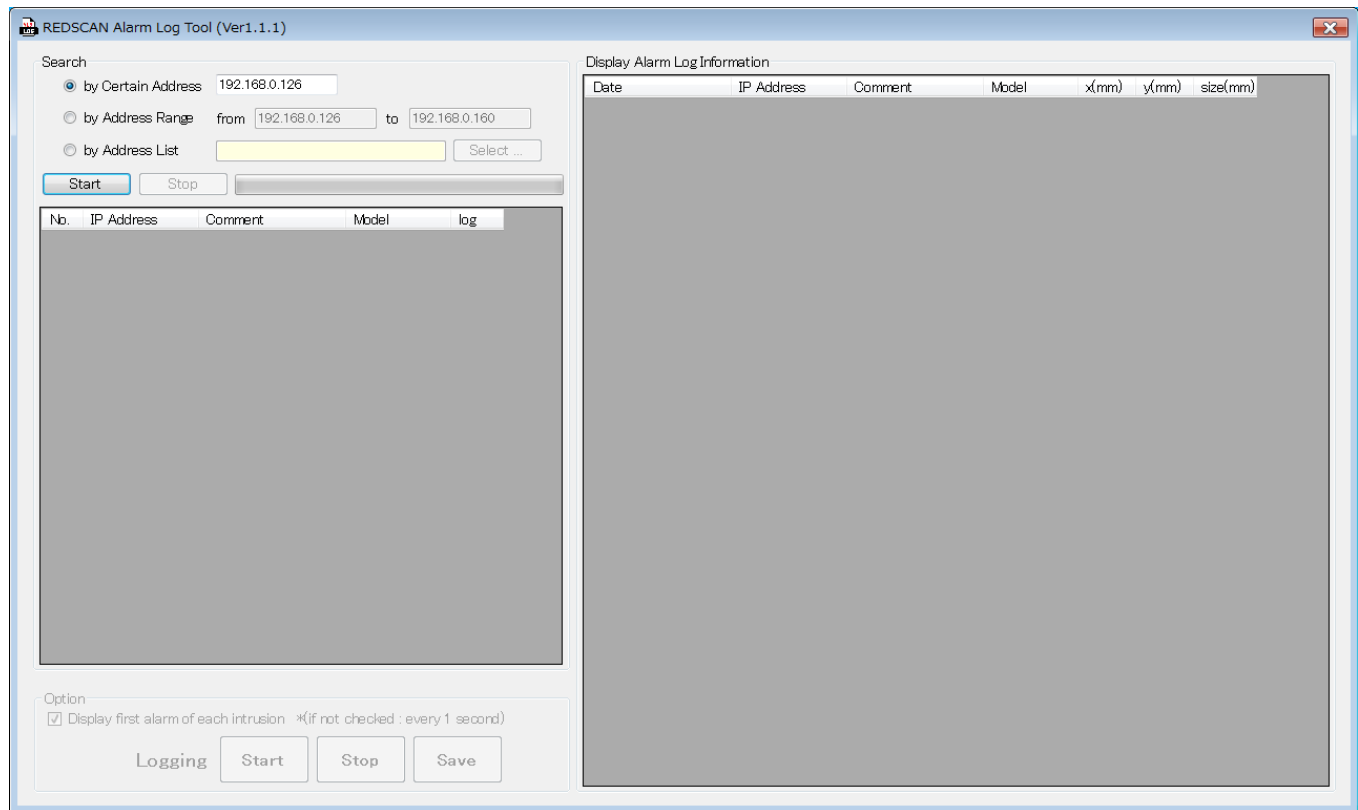
- RLS-3060 L/SH Version 6.0.0 or later
- RLS-2020 Version 1.0.0 or later.

1.2. Software Requirements

- .Net Framework 4.5 or later.
-

2. How to use REDSCAN Alarm Log

1. Start the REDSCAN Alarm Log.



1 Register the detectors to keep alarm information.

You are able to choose from three methods, “by Specific Address”, “by Address Range”, and “by Address List”.

“by Specific Address” : It is used for register a specific detector.

“by Address Range” : It is used for register multiple detectors, or unknown IP address detectors.

“by Address List” : Loads detector information from Address List.

2 Click “Start” button.

Show detector information, if RLS-2020 or RLS-3060 exists.

3 Check “log” box you want to get information.

4 Click “Start” button, and start to get alarm information.

Alarm information is shown in ”Alarm Log”, when receives alarm from the detector.

5 If you want to stop getting alarm information, click “Stop” button.

Click “Save” button, then you are able to save alarm information on the PC.